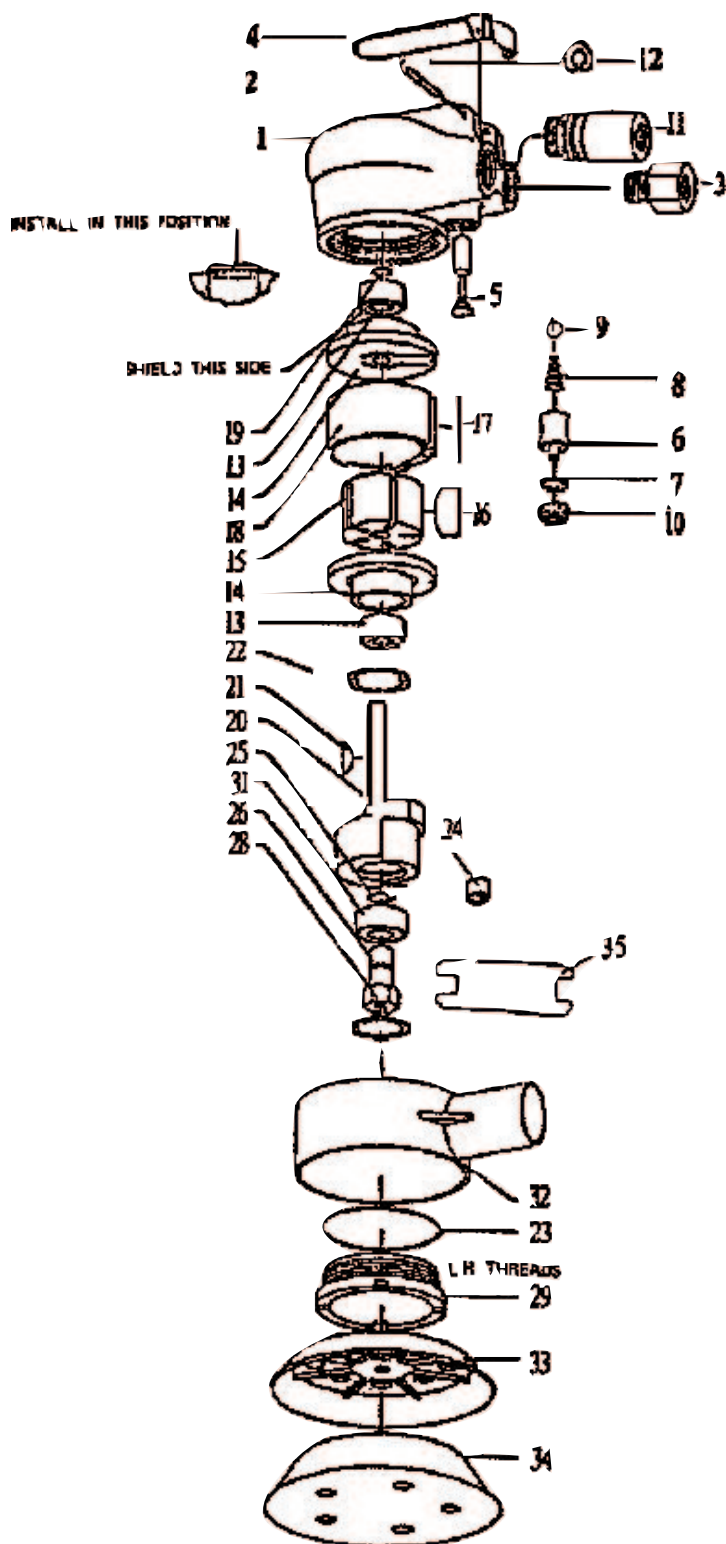


Order Code: KBE-270-2600K

## Spare Parts Breakdown



No.	Order Code	Description
1	KBE-298-1082S	Housing
2	KBE-298-1085S	Rivet
3	KBE-298-1088S	Inlet Adapter
4	KBE-298-1091S	Lever
5	KBE-298-1094S	Valve
6	KBE-298-1097S	Air Regulator Nut
7	KBE-298-1100S	O-Ring
8	KBE-298-1103S	Spring
9	KBE-298-1106S	O-Ring
10	KBE-298-1109S	Air Regulator Nut
11	KBE-298-1112S	Muffler
12	KBE-298-1115S	Retaining Ring
13	CES-298-6001B	Bearing
14	KBE-298-1118S	End Plate
15	KBE-298-1121S	Rotor
16	KBE-298-1124S	Rotor Blades Set (5)
17	KBE-298-1127S	Roll Pin
18	KBE-298-1130S	Cylinder
19	KBE-298-1133S	Retaining Ring
20	KBE-298-1136S	Counter Balance
21	KBE-298-1139S	Key
22	KBE-298-1142S	Spacer
23	KBE-298-1145S	O-Ring
24	KBE-298-1148S	Needle Bearing
25	KBE-298-1151S	Retaining Ring
26	KBE-298-1154S	Spindle
28	KBE-298-1157S	Retaining Ring
29	KBE-298-1160S	Lock Ring
31	CES-298-9106M	Bearing
32	KBE-298-1163S	Shroud
33	KBE-298-1166S	Vacuum Pad Cover
34	KEN-280-3920K	"Stikit" Backing Pad
	KEN-280-3390K	"Velcro" Backing Pad
35	KBE-280-0055A	Spanner

**For Abrasives see Operators Manual**

## OIL DAILY

Distributed by:

**KENNEDY TOOLS**

Wigston Works, Leicester, England.

ISO 9002 REGISTERED COMPANY

©The Kennedy Group Ltd. March 1997