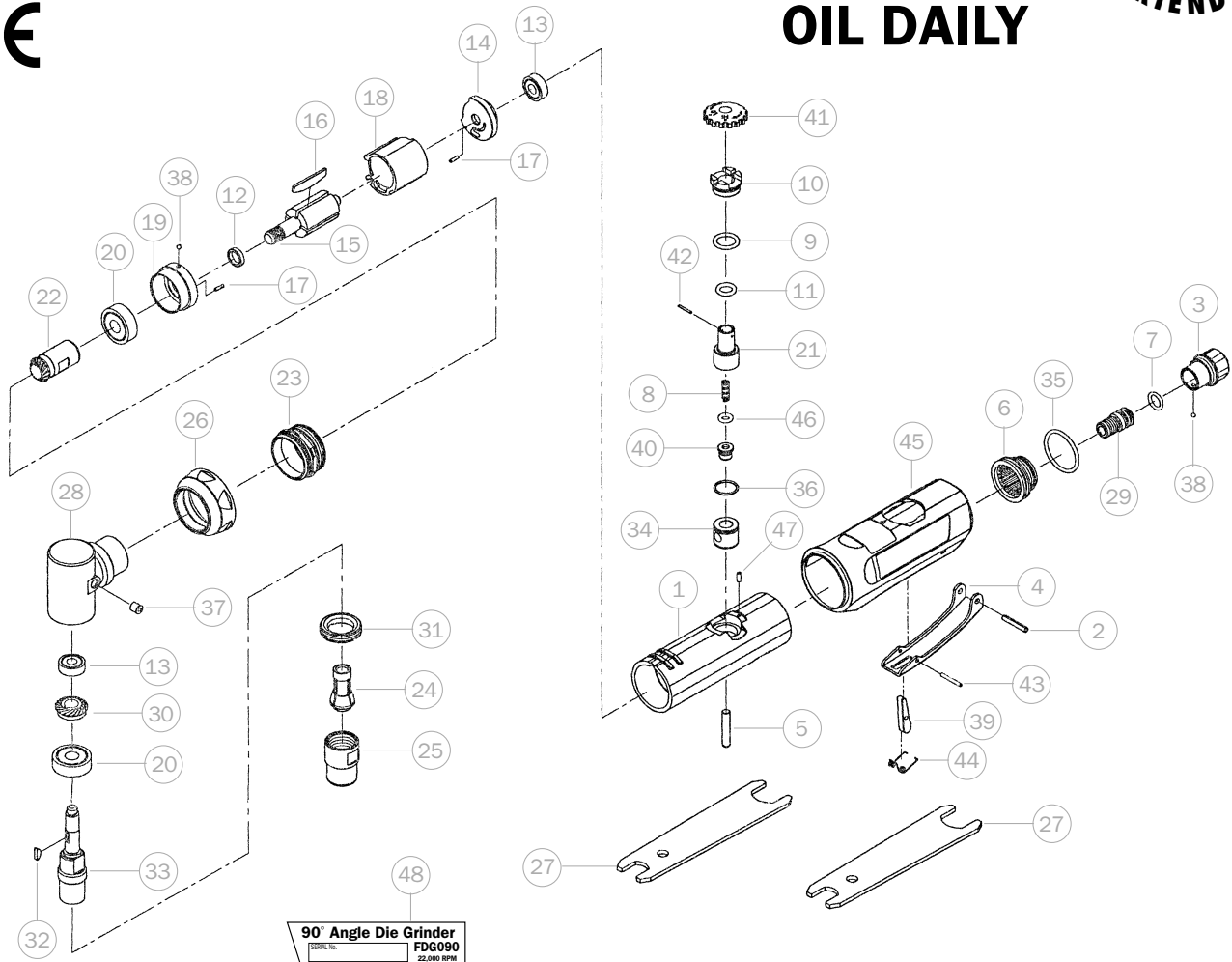


90° ANGLE DIE GRINDER

MODEL FDG090 ORDER CODE KBE-270-2222K

CE

OIL DAILY



No.	Order Code	Description	No.	Order Code	Description
1	KBE-298-9301S	Motor Housing	25	KBE-298-9325S	Collet Nut
2	KBE-298-9302S	Lever Pin (3x18L)	26	KBE-298-9326S	Front Cap
3	KBE-298-9303S	Air Inlet	27	KBE-298-9327S	Collet Spanner (2)
4	KBE-298-9304S	Throttle Lever	28	KBE-298-9328S	Head
5	KBE-298-9305S	Valve Shaft	29	KBE-298-9329S	Fixed Shaft
6	KBE-298-9306S	Deflector	30	KBE-298-9330S	Bevel Gear
7	KBE-298-9307S	"O" Ring (7.5x1.5)	31	KBE-298-9331S	Lock Ring
8	KBE-298-9308S	Spring	32	KBE-298-9332S	Key
9	KBE-298-9309S	"O" Ring (9x2.0)	33	KBE-298-9333S	Spindle
10	KBE-298-9310S	Valve Screw	34	KBE-298-9334S	Bushing
11	KBE-298-9311S	"O" Ring (5.28x1.78)	35	KBE-298-9335S	"O" Ring (22.8x2)
12	KBE-298-9312S	Rotor Spacer	36	KBE-298-9336S	"O" Ring (10.5x1)
13	KBE-298-9313S	Ball Bearing (2) (696ZZ)	37	KBE-298-9337S	Oil Cap
14	KBE-298-9314S	Rear End Plate	38	KBE-298-9338S	Steel Ball (2)
15	KBE-298-9315S	Rotor	39	KBE-298-9339S	Safety Bar
16	KBE-298-9316S	Vane (4)	40	KBE-298-9340S	Throttle Valve
17	KBE-298-9317S	Spring Pin (2) (1.5x6)	41	KBE-298-9341S	Knob
18	KBE-298-9318S	Cylinder	42	KBE-298-9342S	Spring Pin (1x8L)
19	KBE-298-9319S	Front End Plate	43	KBE-298-9343S	Spring Pin (2x15L)
20	KBE-298-9320S	Ball Bearing (2) (608ZZ)	44	KBE-298-9344S	Spring
21	KBE-298-9321S	Controller	45	KBE-298-9345S	Grip
22	KBE-298-9322S	Pinion Gear	46	KBE-298-9346S	"O" Ring (3.8x1.9)
23	KBE-298-9323S	Front Coupling	47	KBE-298-9347S	Spring Pin (2x5L)
24	KBE-298-9324S	Collet	48	KEN-988-5000K	Specification Label