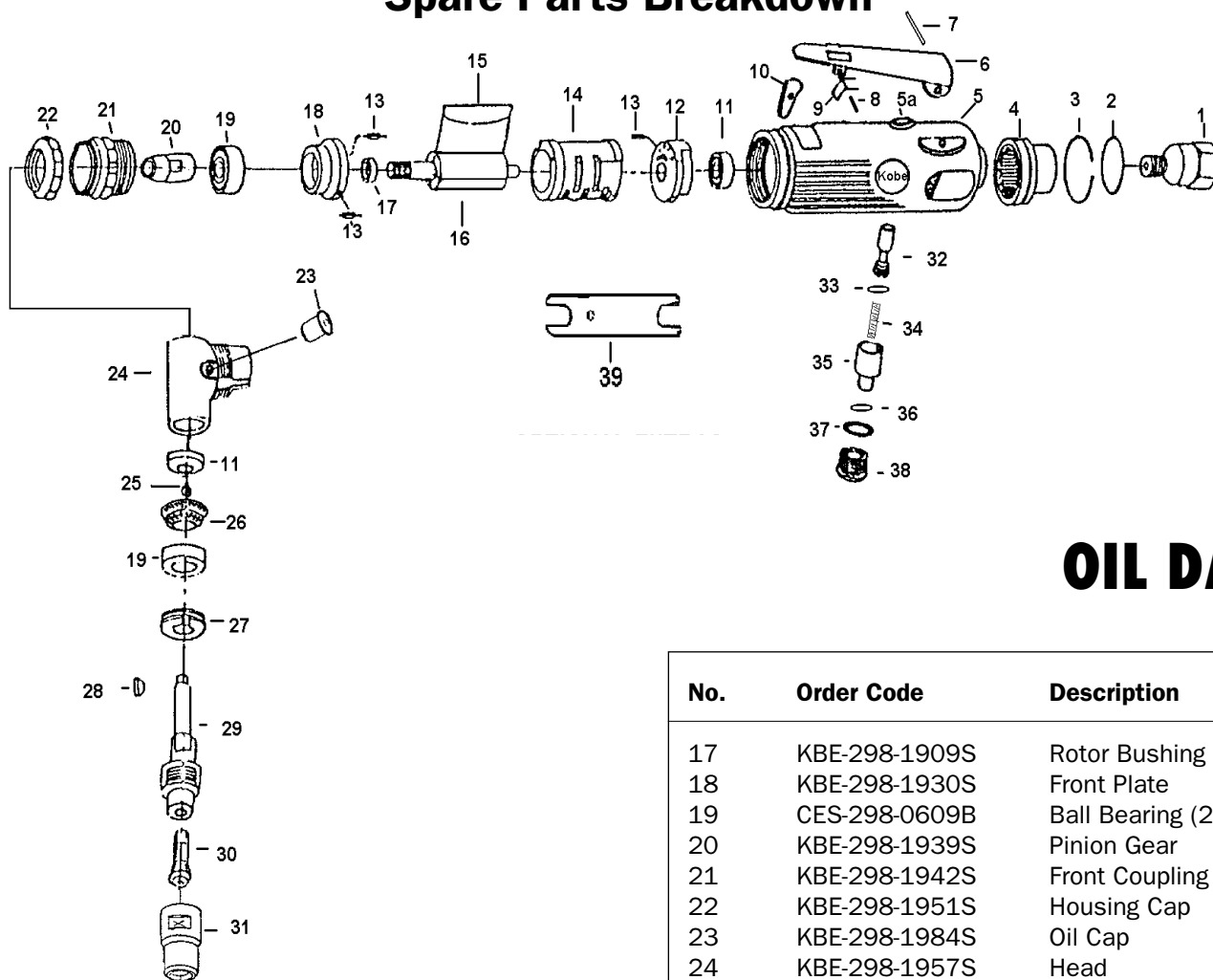


Order Code: KBE-270-2020H

## Spare Parts Breakdown



### OIL DAILY

No.	Order Code	Description
1	KBE-298-1882S	Air Inlet
2	KBE-298-1978S	O-Ring
3	KBE-298-1960S	Retainer Ring
4	KBE-298-1891S	Exhaust Sleeve
5	KBE-298-1876S	Motor Housing
5A	KBE-298-1975S	Bushing
6	KBE-298-1789S	Safety Throttle Lever
7	KBE-298-1879S	Lever Pin
8	KBE-298-1873S	Spring Pin
9	KBE-298-1867S	Spring
10	KBE-298-1870S	Safety Bar
11	CES-298-0696P	Ball Bearing (2)
12	KBE-298-1915S	Rear End Plate
13	KBE-298-1927S	Pin (3)
14	KBE-298-1924S	Cylinder
15	KBE-298-1921S	Rotor Blades (4)
16	KBE-298-1918S	Rotor

No.	Order Code	Description
17	KBE-298-1909S	Rotor Bushing
18	KBE-298-1930S	Front Plate
19	CES-298-0609B	Ball Bearing (2)
20	KBE-298-1939S	Pinion Gear
21	KBE-298-1942S	Front Coupling
22	KBE-298-1951S	Housing Cap
23	KBE-298-1984S	Oil Cap
24	KBE-298-1957S	Head
25	KBE-298-1981S	Retaining Ring
26	KBE-298-1963S	Bevel Gear
27	KBE-298-1966S	Lock Ring
28	KBE-298-1969S	Key
29	KBE-298-1972S	Spindle
30	KBE-280-0070A	Collet 6mm
31	KBE-280-0067A	Collet Nut
32	KBE-298-1888S	Valve Stem
33	KBE-298-1894S	O-Ring
34	KBE-298-1897S	Spring
35	KBE-298-1936S	Controller
36	KBE-298-1906S	O-Ring
37	KBE-298-1900S	O-Ring
38	KBE-298-1903S	Valve Screw
39	KBE-280-0085A	Double End Spanner (2)

**Optional Accessories Available**

KBE-280-0073A	Collet 3mm
KBE-280-0076A	Collet 1/4"
KBE-280-0079A	Collet 1/8"

Distributed by:

**KENNEDY TOOLS**

Wigston Works, Leicester, England.

ISO 9002 REGISTERED COMPANY

©The Kennedy Group Ltd. March 1997