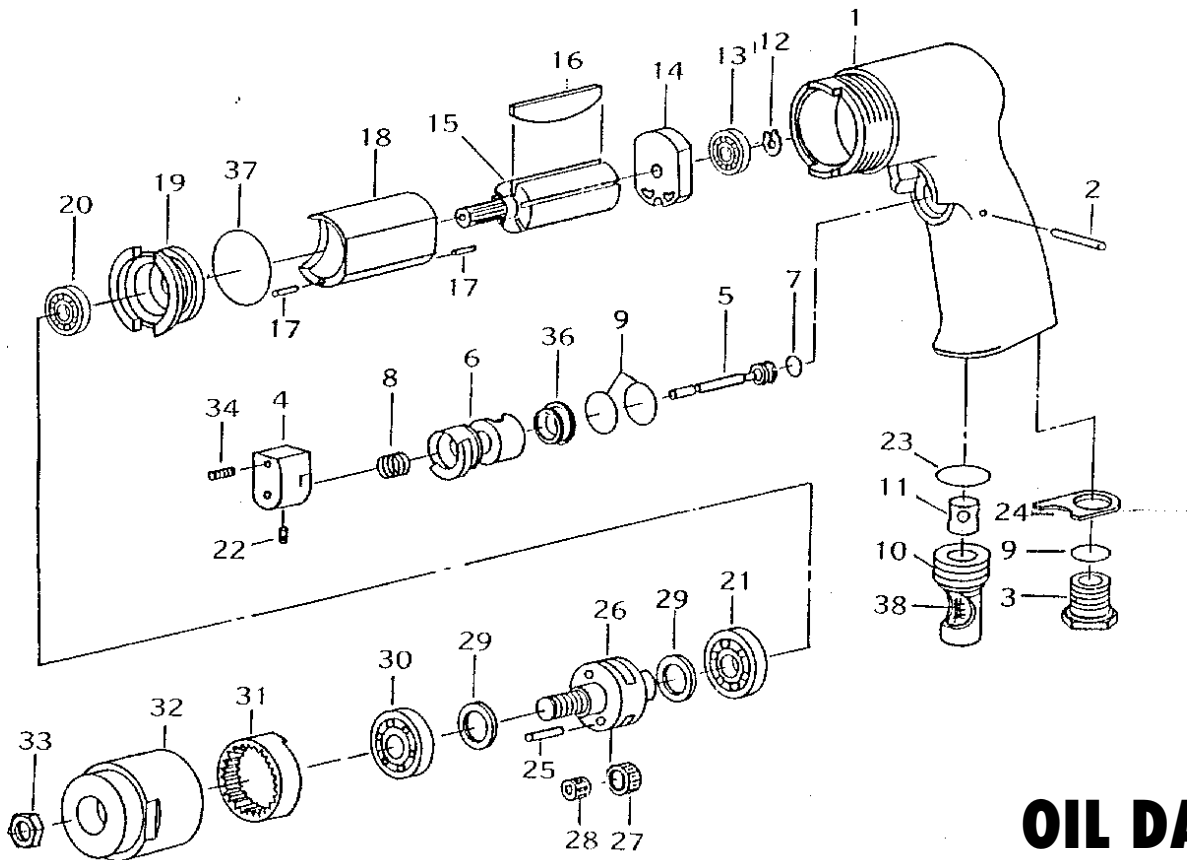


Order Code: KBE-270-1390D

## Spare Parts Breakdown



**OIL DAILY**

No.	Order Code	Description
1	KBE-298-2132S	Motor Housing
2	KBE-298-2135S	Pin
3	KBE-298-2138S	Air Inlet
4	KBE-298-2141S	Trigger
5	KBE-298-2144S	Valve Stem
6	KBE-298-2147S	Valve Bushing
7	KBE-298-2150S	O-Ring
8	KBE-298-2153S	Spring
9	KBE-298-2156S	O-Ring (3)
10	KBE-298-2159S	Muffler Diffuser
11	KBE-298-2162S	Muffler Cap
12	KBE-298-2165S	Retaining Ring
13	CES-298-0696P	Ball Bearing
14	KBE-298-2168S	Rear End Plate
15	KBE-298-2171S	Rotor
16	KBE-298-2174S	Rotor Blades (5)
17	KBE-298-2177S	Pin (2)
18	KBE-298-2180S	Cylinder
19	KBE-298-2183S	Front End Plate

No.	Order Code	Description
20	CES-298-0609B	Ball Bearing
21	CES-298-9050A	Ball Bearing
22	KBE-298-2186S	Set Screw
23	KBE-298-2189S	O-Ring
24	KBE-298-2192S	Muffler Retainer
25	KBE-298-2195S	Planet Pin (2)
26	KBE-298-2198S	Planet Cage
27	KBE-298-2201S	Planet Gears (2)
28	KBE-298-2204S	Needle Bearing (2)
29	KBE-298-2207S	Spacer (2)
30	CES-298-6001B	Ball Bearing
31	KBE-298-2210S	Internal Gear
32	KBE-298-2213S	Front Housing
33	KBE-298-2216S	Spacer
34	KBE-298-2219S	Set Screw
36	KBE-298-2222S	Valve Cap
37	KBE-298-2225S	O-Ring
38	KBE-298-2228S	Muffler
	KBE-280-0119A	10 mm Chuck (Not Shown)
	KBE-280-0122A	Chuck Key (Not Shown)

Distributed by:

**KENNEDY TOOLS**

Wigston Works, Leicester, England.

ISO 9002 REGISTERED COMPANY

©The Kennedy Group Ltd. October 1999