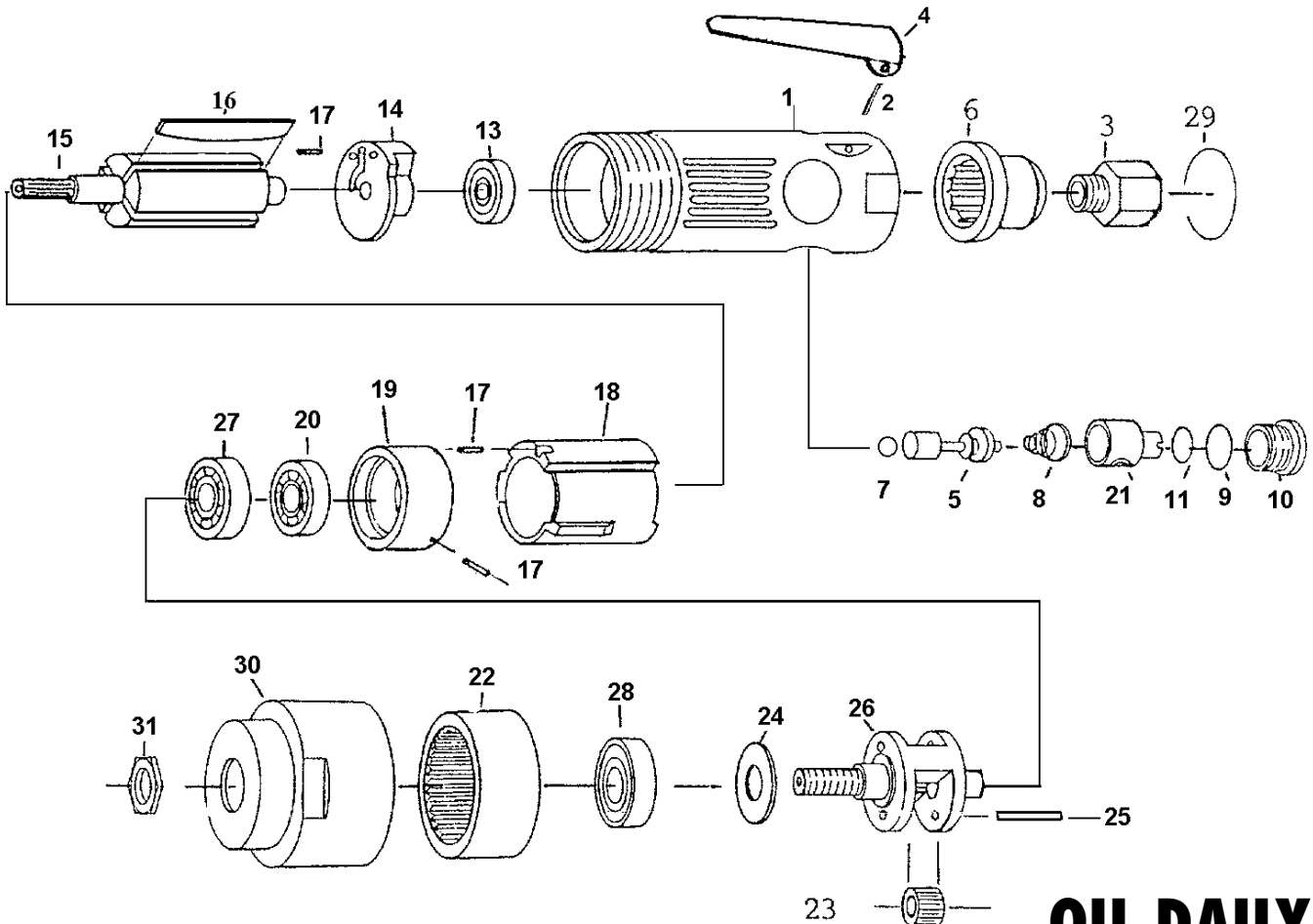


Order Code: KBE-270-1450N

Spare Parts Breakdown



OIL DAILY

No.	Order Code	Description
1	KBE-298-2348S	Motor Housing
2	KBE-298-0004S	Lever Pin
3	KBE-298-1786S	Air Inlet
4	KBE-298-1789S	Safety Throttle Lever
5	KBE-298-1792S	Valve Stem
6	KBE-298-1795S	Exhaust Deflector
7	KBE-298-1934S	O-Ring
8	KBE-298-1801S	Valve Spring
9	KBE-298-1967S	O-Ring
10	KBE-298-1807S	Throttle Valve Plug
11	KBE-298-2351S	O-Ring
13	CES-298-0627B	Ball Bearing
14	KBE-298-1819S	Rear End Plate
15	KBE-298-2354S	Rotor
16	KBE-298-0040S	Rotor Blades (4)
17	KBE-298-1955S	Pin (3)

No.	Order Code	Description
18	KBE-298-2357S	Cylinder
19	KBE-298-2360S	Front End Plate
20	CES-298-9105N	Ball Bearing
21	KBE-298-1840S	Air Regular
22	KBE-298-2363S	Internal Gear
23	KBE-298-2366S	Planet Gears (2)
24	KBE-298-2369S	Washer
25	KBE-298-2372S	Pin (2)
26	KBE-298-2375S	Planet
27	CES-298-9050A	Ball Bearing
28	CES-298-6001B	Ball Bearing
29	KBE-298-1864S	Retainer Ring
30	KBE-298-2378S	Front Housing
31	KBE-298-2216S	Chuck Spacer
	KBE-280-0119A	10mm Chuck (Not Shown)
	KBE-280-0122A	Chuck Key (Not Shown)

Distributed by:

KENNEDY TOOLS

Wigston Works, Leicester, England.

ISO 9002 REGISTERED COMPANY

©The Kennedy Group Ltd. October 1999