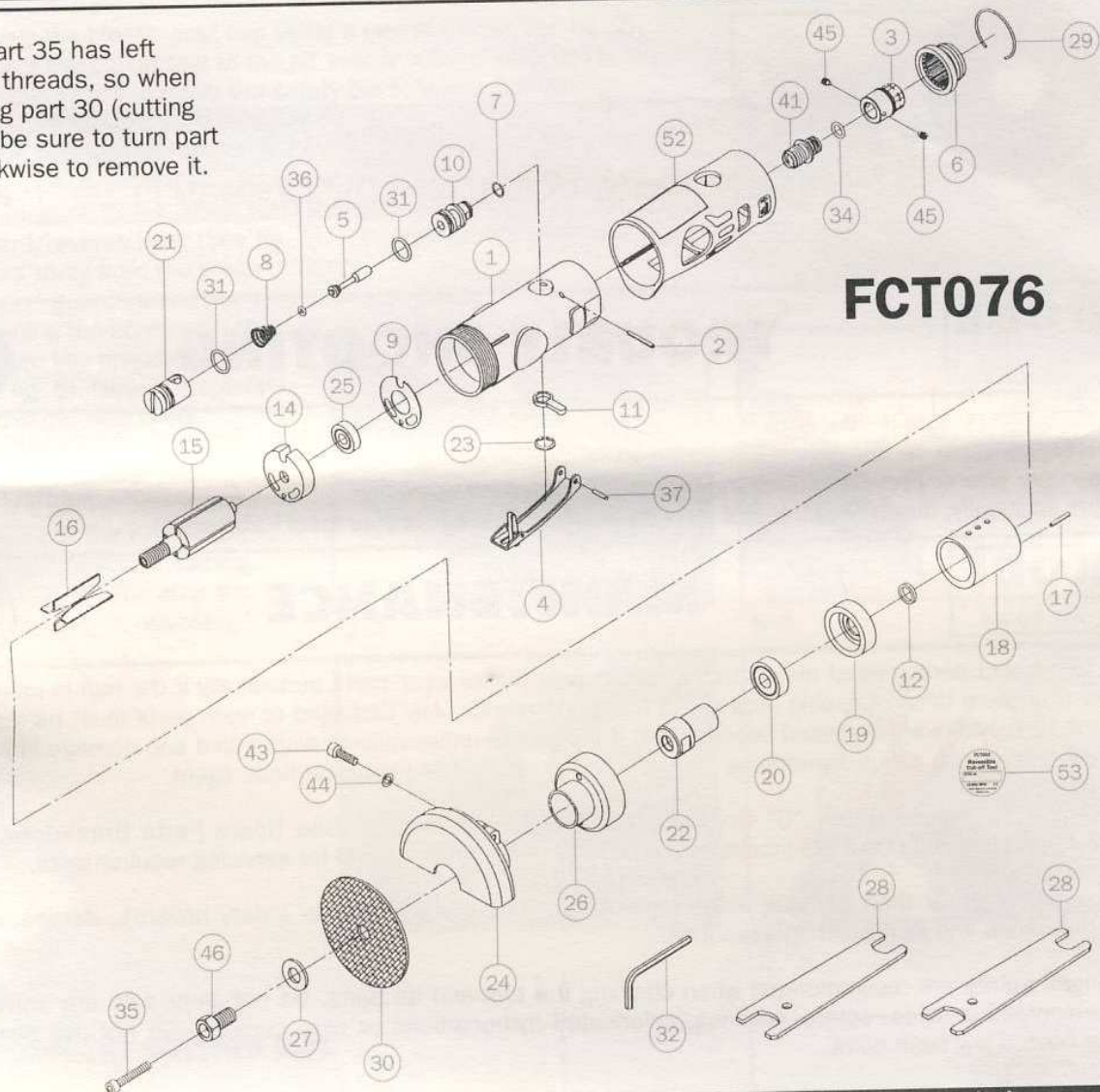


Note: Part 35 has left handed threads, so when removing part 30 (cutting wheel), be sure to turn part 35 clockwise to remove it.



FCT076

No.	Order Code	Description	No.	Order Code	Description
1	.KBE-298-3600S	.. Motor housing	23	.KBE-298-3621S	.. Retaining ring (ISTW-10)
2	.KBE-298-3601S	.. Spring pin (2.5x22)	24	.KBE-298-3622S	.. Disc cover
3	.KBE-298-3602S	.. Air inlet	25	.KBE-298-3623S	.. Ball bearing (607zz)
4	.KBE-298-3603S	.. Throttle lever	26	.KBE-298-3624S	.. Clamp nut
5	.KBE-298-3604S	.. Valve stem	27	.KBE-298-3625S	.. Washer (3/8")
6	.KBE-298-3605S	.. Deflector	28	.KBE-298-3626S	.. Double ended spanner (2) (14-19)
7	.KBE-298-3606S	.. "O" ring (8x1)	29	.KBE-298-3627S	.. Retainer ring
8	.KBE-298-3607S	.. Spring	30	.KEN-230-0020K	.. Cutting disc (76mm)
9	.KBE-298-3608S	.. Motor gasket	31	.KBE-298-3629S	.. "O" ring (2) (12.42x1.78)
10	.KBE-298-3609S	.. Reverse valve	32	.KBE-298-3630S	.. Hexagon key wrench (4mm)
11	.KBE-298-3610S	.. Reverse lever	34	.KBE-298-3631S	.. "O" ring (7.65x1.78)
12	.KBE-298-3611S	.. Rotor spacer	35	.KBE-298-3632S	.. Screw (L M5x35)
14	.KBE-298-3612S	.. Rear end plate	36	.KBE-298-3633S	.. "O" ring (3.5x1.5)
15	.KBE-298-3613S	.. Rotor	37	.KBE-298-3634S	.. Spring pin (3x18)
16	.KBE-298-3614S	.. Rotor blade (4)	41	.KBE-298-3635S	.. Fixed shaft
17	.KBE-298-3615S	.. Spring pin (2.5x16)	43	.KBE-298-3636S	.. Screw (M5x16)
18	.KBE-298-3616S	.. Cylinder	44	.KBE-298-3637S	.. Spring washer (M5)
19	.KBE-298-3617S	.. Front end plate	45	.KBE-298-3638S	.. Set screw (2) (M4x5)
20	.KBE-298-3618S	.. Ball bearing (6000zz)	46	.KBE-298-3639S	.. Screw
21	.KBE-298-3619S	.. Air regulator	52	.KBE-298-3640S	.. Rubber grip
22	.KBE-298-3620S	.. Spindle	53	.KBE-298-3641S	.. Specification label